

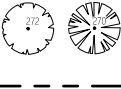





R=257.00
 L=134.41
 Δ=29°58'01"
 CHB=S 33°34'46" E
 CHD=132.89

R=229.50
 L=134.87
 Δ=33°40'20"
 CHB=N 35°25'55" W
 CHD=132.94

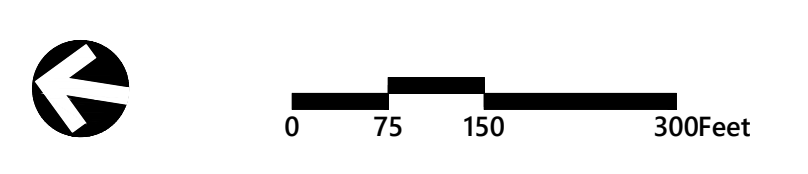
R=882.50
 L=200.06
 Δ=12°59'24"
 CHB=N 58°45'46" W
 CHD=199.65

PARCEL TO BE DEDICATED
 TO VILLAGE OF BROOKVILLE
 (± 7.57 ACRES)

- Legend**
-  TREE WITHIN PROPOSED DISTURBED AREA
 -  RIGHT-OF-WAY/PROPERTY LINE
 -  BUILDING SETBACK
 -  BELGIUM BLOCK CURB



Key Map
 1" = 500'



**The Estates at Brookville
 Property Subdivision**

Titan Golf, LLC
 Tam O'Shanter Golf Club
 74 Fruitledge Road
 Village of Brookville, New York 11545

No.	Revision	Date	App'd.

Designed by: TC Checked by: SS
 Issued for: Date: **Preliminary Subdivision** Aug. 30, 2021


Not Approved for Construction

**Tree Survey
 Overall Plan**

Drawing Title: **Tree Survey Overall Plan**

Sheet 1 of 6

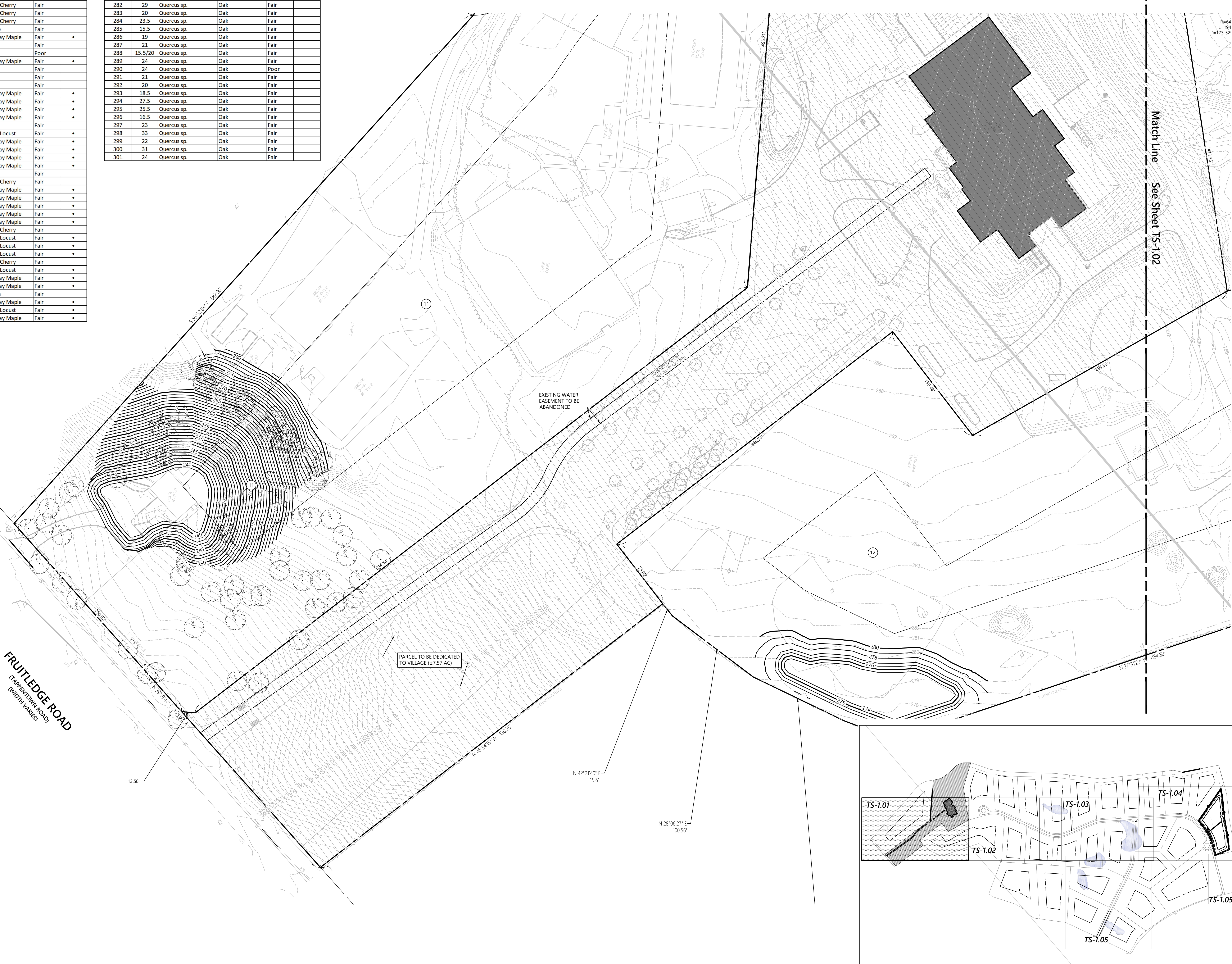
Project Number: **26747.01**

Professional Engineer Seal: 

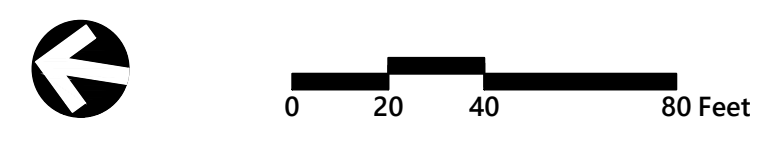
TS-1.00

Tree No.	DBH	Botanical Name	Common Name	Condition	Invasive
211	36.5	Quercus sp.	Oak	Fair	
212	25	Quercus sp.	Oak	Fair	
213	34.5	Acer sp.	Maple	Fair	
214	24.5	Acer sp.	Maple	Fair	
215	19	Prunus serotina	Black Cherry	Fair	
216	25	Prunus serotina	Black Cherry	Poor	
217	30.5	Tetradium daniellii	Korean Tetradium	Fair	
218	14.5	Fraxinus sp.	Ash	Fair	
219	14	Acer platanoides	Norway Maple	Fair	*
220	6.5	Acer platanoides	Norway Maple	Fair	*
221	25	Acer sp.	Maple	Fair	
222	20	Quercus sp.	Oak	Fair	
223	21	Acer platanoides	Norway Maple	Fair	*
224	9	Acer platanoides	Norway Maple	Fair	*
225	21	Quercus sp.	Oak	Fair	
226	10	Quercus sp.	Oak	Fair	
227	6	Prunus serotina	Black Cherry	Fair	
228	25	Prunus serotina	Black Cherry	Fair	
229	8	Prunus serotina	Black Cherry	Fair	
230	8	Acer sp.	Maple	Fair	
231	9.5	Acer platanoides	Norway Maple	Fair	*
231	14	Quercus sp.	Oak	Fair	
232	14	Pinus sp.	Pine	Poor	
233	10	Acer platanoides	Norway Maple	Fair	*
234	26	Quercus sp.	Oak	Fair	
235	29	Quercus sp.	Oak	Fair	
236	20	Quercus sp.	Oak	Fair	
237	6	Acer platanoides	Norway Maple	Fair	*
238	20	Acer platanoides	Norway Maple	Fair	*
239	21	Acer platanoides	Norway Maple	Fair	*
240	7	Acer platanoides	Norway Maple	Fair	*
241	22.5	Quercus sp.	Oak	Fair	
242	15	Robinia pseudoacacia	Black Locust	Fair	*
243	8/8	Acer platanoides	Norway Maple	Fair	*
244	10	Acer platanoides	Norway Maple	Fair	*
245	8.5	Acer platanoides	Norway Maple	Fair	*
246	6.5	Acer platanoides	Norway Maple	Fair	*
247	24	Quercus sp.	Oak	Fair	
248	8	Prunus serotina	Black Cherry	Fair	
249	14.5	Acer platanoides	Norway Maple	Fair	*
250	7	Acer platanoides	Norway Maple	Fair	*
251	11	Acer platanoides	Norway Maple	Fair	*
252	11	Acer platanoides	Norway Maple	Fair	*
253	11	Acer platanoides	Norway Maple	Fair	*
254	14	Prunus serotina	Black Cherry	Fair	*
255	11	Robinia pseudoacacia	Black Locust	Fair	*
256	10	Robinia pseudoacacia	Black Locust	Fair	*
257	9	Robinia pseudoacacia	Black Locust	Fair	*
258	11	Prunus serotina	Black Cherry	Fair	*
259	10	Robinia pseudoacacia	Black Locust	Fair	*
260	8	Acer platanoides	Norway Maple	Fair	*
261	6	Acer platanoides	Norway Maple	Fair	*
262	21	Acer sp.	Maple	Fair	
263	5.5	Acer platanoides	Norway Maple	Fair	*
264	15	Robinia pseudoacacia	Black Locust	Fair	*
265	15/20	Acer platanoides	Norway Maple	Fair	*

Tree No.	DBH	Botanical Name	Common Name	Condition	Invasive
266	5	Acer platanoides	Norway Maple	Fair	*
267	31	Quercus sp.	Oak	Fair	
268	7	Pinus sp.	Pine	Fair	
269	37	Quercus sp.	Oak	Fair	
270	8	Tsuga canadensis	Eastern Hemlock	Fair	
271	9	Fraxinus sp.	Ash	Fair	
272	10	Liquidambar styraciflua	Sweetgum	Fair	
273	24	Quercus sp.	Oak	Fair	
274	28	Quercus sp.	Oak	Fair	
275	7.5	Prunus sp.	Cherry	Fair	
276	24.5	Quercus sp.	Oak	Fair	
277	18.5	Quercus sp.	Oak	Fair	
278	23.5	Quercus sp.	Oak	Fair	
279	23	Acer sp.	Maple	Fair	
280	22	Acer platanoides	Norway Maple	Fair	*
281	24	Tetradium daniellii	Korean Tetradium	Fair	
282	29	Quercus sp.	Oak	Fair	
283	20	Quercus sp.	Oak	Fair	
284	23.5	Quercus sp.	Oak	Fair	
285	15.5	Quercus sp.	Oak	Fair	
286	19	Quercus sp.	Oak	Fair	
287	21	Quercus sp.	Oak	Fair	
288	15.5/20	Quercus sp.	Oak	Fair	
289	24	Quercus sp.	Oak	Fair	
290	24	Quercus sp.	Oak	Poor	
291	21	Quercus sp.	Oak	Fair	
292	20	Quercus sp.	Oak	Fair	
293	18.5	Quercus sp.	Oak	Fair	
294	27.5	Quercus sp.	Oak	Fair	
295	25.5	Quercus sp.	Oak	Fair	
296	16.5	Quercus sp.	Oak	Fair	
297	23	Quercus sp.	Oak	Fair	
298	33	Quercus sp.	Oak	Fair	
299	22	Quercus sp.	Oak	Fair	
300	31	Quercus sp.	Oak	Fair	
301	24	Quercus sp.	Oak	Fair	



Key Map
 1" = 500'


**The Estates at Brookville
 Property Subdivision**

Titan Golf, LLC
 Tam O'Shanter Golf Club
 74 Fruitledge Road
 Village of Brookville, New York 11545

No.	Revision	Date	App'd.

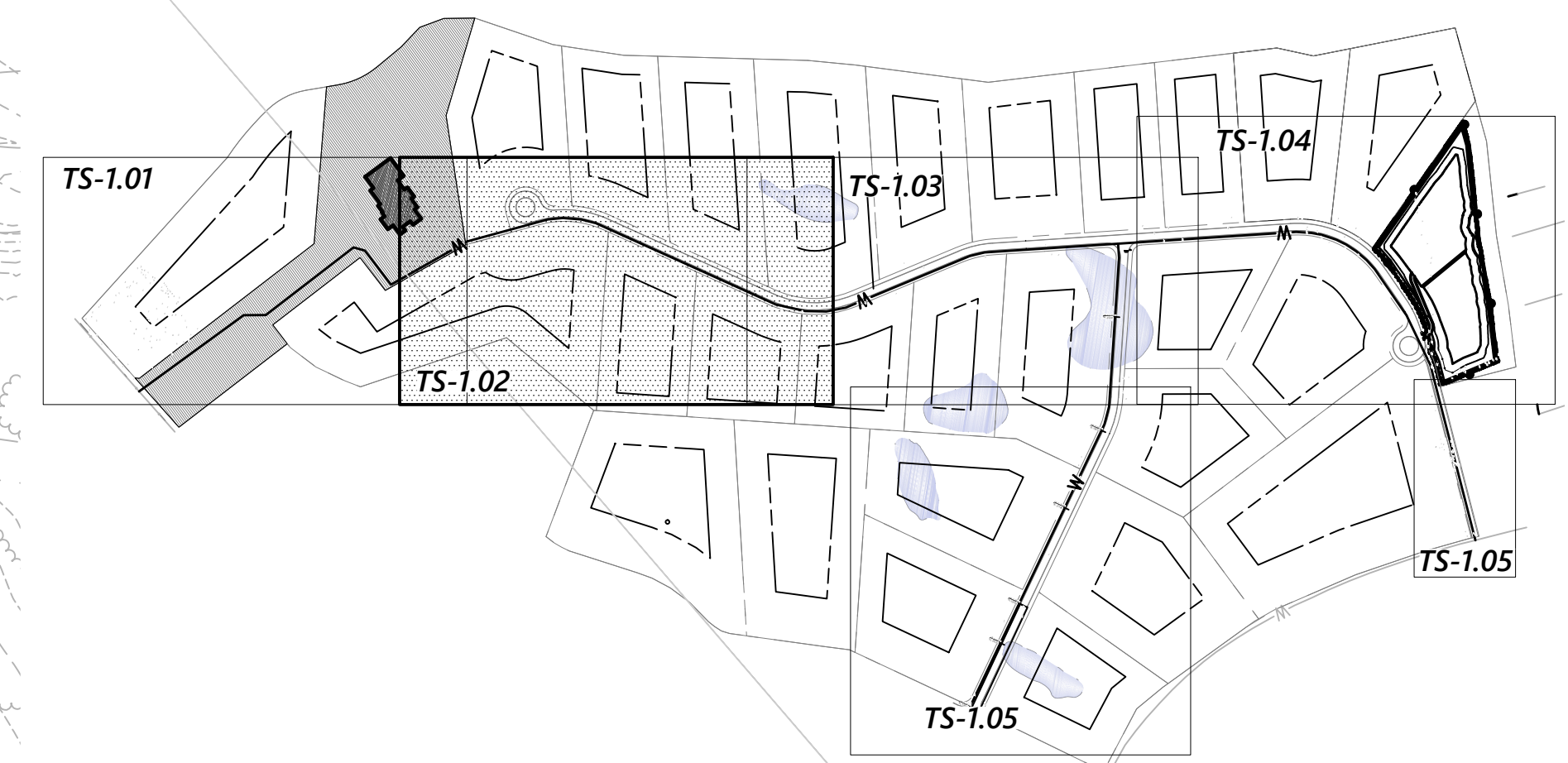
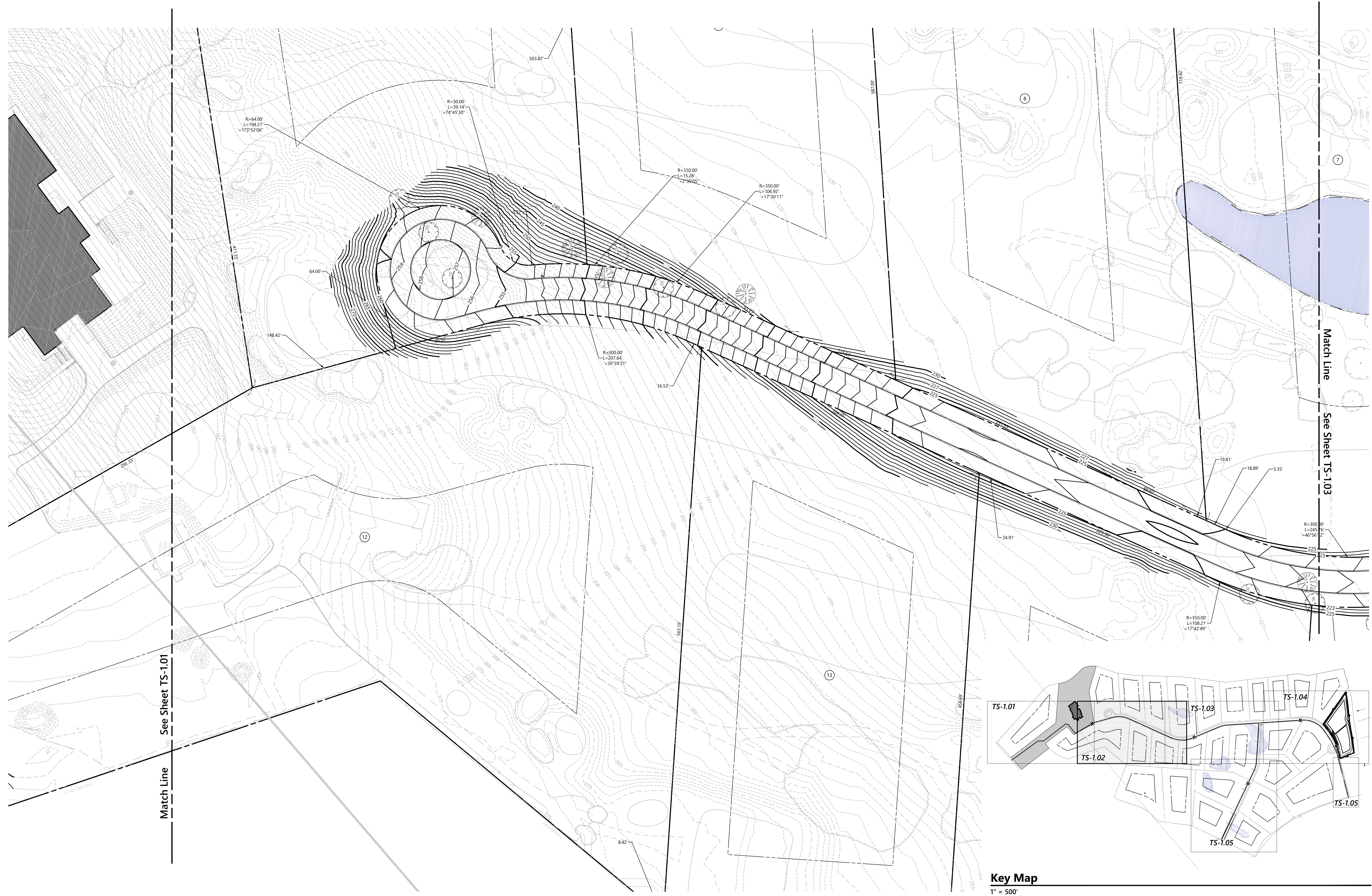
Designed by: TC Checked by: SS
 Issued for: Preliminary Subdivision Date: Aug. 30, 2021

Not Approved for Construction
 Drawing Title: **Tree Survey
 Partial Plan**

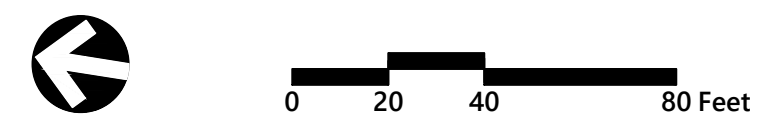
Drawing Number: **TS-1.01**
 Sheet 2 of 6

IT IS A VIOLATION OF SECTION 2209 OF ARTICLE 145 OF THE NEW YORK STATE EDUCATION LAW TO BEAR THE SEAL OF A PROFESSIONAL ENGINEER UNLESS THE PERSON IS ACTING UNDER THE DIRECTION OF A LICENSED PROFESSIONAL ENGINEER.
 Project Number: 26747.01

Tree No.	DBH	Botanical Name	Common Name	Condition	Invasive
198	23	Acer platanoides	Norway Maple	Fair	•
199	24.5	Pinus sp.	Pine	Fair	
200	23	Acer sp.	Maple	Fair	
201	31.5	Pinus sp.	Pine	Fair	
202	27	Acer platanoides	Norway Maple	Fair	•
203	11	Quercus sp.	Oak	Fair	
204	13/13	Larix sp.	Larch	Fair	
205	29	Pinus sp.	Pine	Fair	
206	22	Picea sp.	Spruce	Fair	
207	32	Pinus sp.	Pine	Fair	
208	12	Acer platanoides	Norway Maple	Fair	•
209	20	Acer platanoides	Norway Maple	Fair	•
210	27	Platanus x acerifolia	London Planetree	Fair	



Key Map
1" = 500'



**The Estates at Brookville
 Property Subdivision**


Titan Golf, LLC
 Tam O'Shanter Golf Club
 74 Fruitledge Road
 Village of Brookville, New York 11545

No.	Revision	Date	App'd.

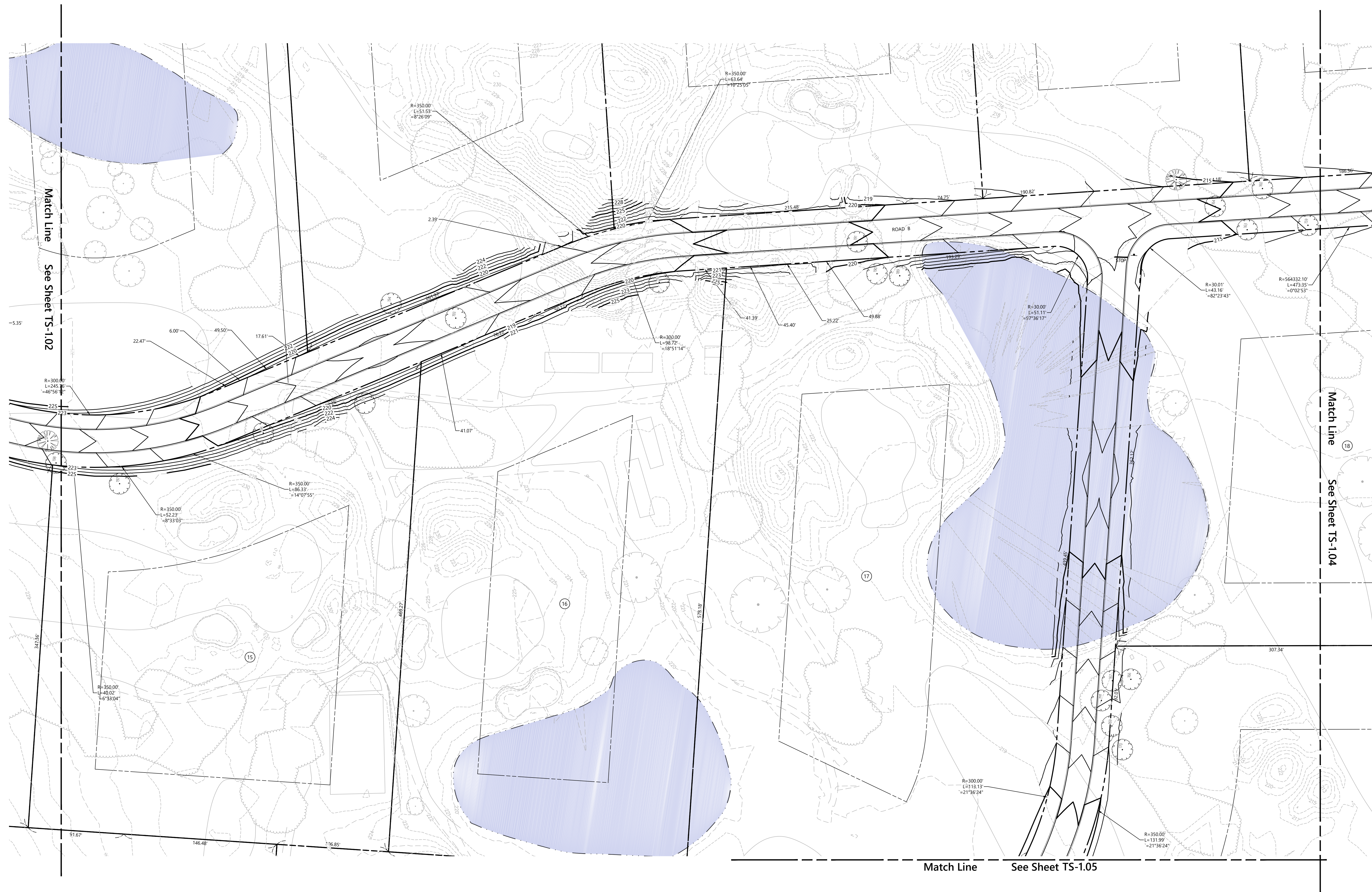
Designed by: TC Checked by: KW
 Issued for: Preliminary Subdivision Date: Aug. 30, 2021

Not Approved for Construction

Tree Survey
 Partial Plan

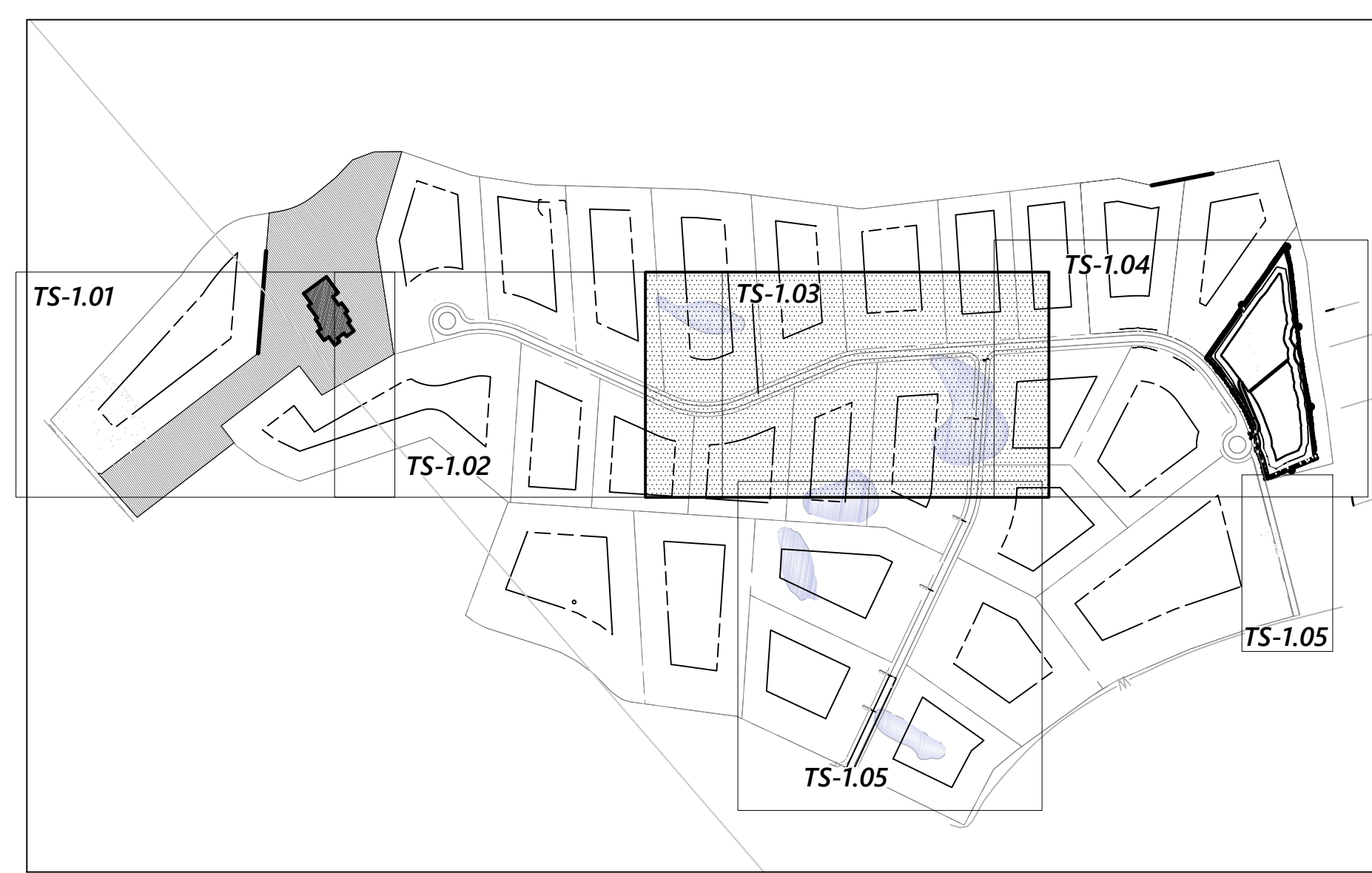


TS-1.02
 Sheet 3 of 6



Tree No.	DBH	Botanical Name	Common Name	Condition	Invasive
159	26.5	Acer platanoides	Norway Maple	Fair	•
160	18.5	Acer platanoides	Norway Maple	Fair	•
161	12.5	Malus sp.	Crabapple	Fair	•
162	8	Malus sp.	Crabapple	Fair	•
163	24.5	Platanus x acerifolia	London Planetree	Fair	•
164	39	Platanus x acerifolia	London Planetree	Fair	•
165	23.5	Pinus sp.	Pine	Fair	•
166	9/9/7	Prunus sp.	Cherry	Fair	•
167	14/7.5	Prunus sp.	Cherry	Fair	•
168	21	Acer platanoides	Norway Maple	Fair	•
169	20.5	Acer platanoides	Norway Maple	Fair	•
170	20.5	Acer platanoides	Norway Maple	Fair	•

Tree No.	DBH	Botanical Name	Common Name	Condition	Invasive
189	10.5	Acer platanoides	Norway Maple	Fair	•
190	36.5	Quercus sp.	Oak	Fair	•
191	32	Platanus x acerifolia	London Planetree	Fair	•
192	46	Quercus sp.	Oak	Poor	•
193	12	Malus sp.	Crabapple	Fair	•
194	16	Acer sp.	Maple	Fair	•
195	14	Picea sp.	Spruce	Fair	•
196	22/13/24/16	Prunus sp.	Cherry	Fair	•
197	19.5	Quercus sp.	Oak	Fair	•
198	23	Acer platanoides	Norway Maple	Fair	•
199	24.5	Pinus sp.	Pine	Fair	•



Key Map
1" = 500'



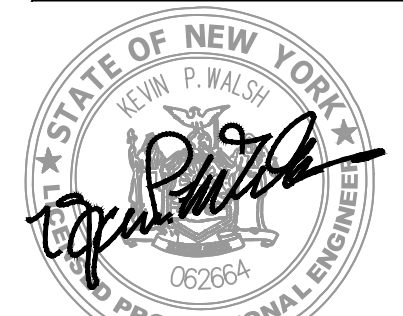
The Estates at Brookville
Property Subdivision

Titan Golf, LLC
Tam O'Shanter Club
74 Fruitledge Road
Village of Brookville, New York 11545

No.	Revision	Date	App'd.

Designed by: TC Checked by: SS
Issued for: Preliminary Subdivision Date: Aug. 30, 2021

Not Approved for Construction
Tree Survey
Partial Plan



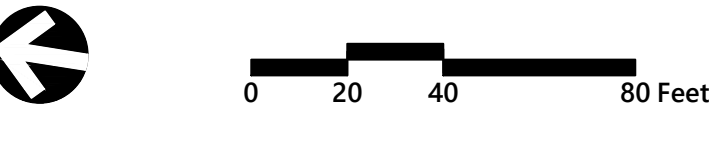
TS-1.03
Sheet 4 of 6



Key Map
 1" = 50'

Tree No.	DBH	Botanical Name	Common Name	Condition	Invasive
87	11	Acer platanoides	Norway Maple	Fair	•
88	10	Acer platanoides	Norway Maple	Fair	•
89	9	Acer platanoides	Norway Maple	Fair	•
90	12.5	Acer platanoides	Norway Maple	Fair	•
91	14.5	Acer platanoides	Norway Maple	Fair	•
92	16	Acer platanoides	Norway Maple	Fair	•
93	5	Acer platanoides	Norway Maple	Fair	•
94	5.5	Acer platanoides	Norway Maple	Fair	•
95	12	Acer platanoides	Norway Maple	Fair	•
96	6.5	Acer platanoides	Norway Maple	Fair	•
97	13.5	Acer platanoides	Norway Maple	Fair	•
98	22	Acer sp.	Maple	Fair	•
99	11.5	Acer platanoides	Norway Maple	Fair	•
100	13	Acer platanoides	Norway Maple	Fair	•
101	13	Quercus sp.	Oak	Fair	•
102	11	Acer platanoides	Norway Maple	Fair	•
103	17	Acer platanoides	Norway Maple	Fair	•
104	7.5	Acer platanoides	Norway Maple	Fair	•
105	11.5	Acer platanoides	Norway Maple	Fair	•
106	11.5	Quercus sp.	Oak	Poor	•
107	20	Carya sp.	Hickory	Fair	•
108	11/11	Acer platanoides	Norway Maple	Fair	•
109	24	Quercus sp.	Oak	Fair	•
110	22	Quercus sp.	Oak	Fair	•
111	6	Betula sp.	Birch	Fair	•
112	15	Prunus sp.	Cherry	Fair	•
113	11	Quercus sp.	Oak	Fair	•
114	9	Prunus sp.	Cherry	Poor	•
115	8	Prunus sp.	Cherry	Fair	•
116	26	Quercus sp.	Oak	Fair	•
117	20	Acer platanoides	Norway Maple	Fair	•
118	18	Pinus sp.	Pine	Fair	•
119	6	Acer platanoides	Norway Maple	Fair	•
120	25	Quercus sp.	Oak	Fair	•
121	14	Betula sp.	Birch	Fair	•
122	22	Quercus sp.	Oak	Fair	•
123	20	Quercus sp.	Oak	Fair	•
124	24	Pinus sp.	Pine	Fair	•
125	20	Pinus sp.	Pine	Fair	•
126	20.5	Pinus sp.	Pine	Fair	•
127	9/10/6.5	Pinus sp.	Pine	Fair	•
128	20	Pinus sp.	Pine	Fair	•
129	21.5	Pinus sp.	Pine	Fair	•
130	27	Pinus sp.	Pine	Fair	•
131	35.5	Pinus sp.	Pine	Fair	•
132	24.5	Pinus sp.	Pine	Fair	•
133	24	Pinus sp.	Pine	Fair	•

Tree No.	DBH	Botanical Name	Common Name	Condition	Invasive
134	36	Quercus sp.	Oak	Fair	•
135	26.5	Pinus sp.	Pine	Fair	•
136	38	Pinus sp.	Pine	Fair	•
137	24.5	Pinus sp.	Pine	Fair	•
138	22.5	Picea sp.	Spruce	Poor	•
139	25	Acer platanoides	Norway Maple	Fair	•
140	23	Acer platanoides	Norway Maple	Fair	•
141	22.5	Acer platanoides	Norway Maple	Fair	•
142	11	Pinus sp.	Pine	Poor	•
143	23.5	Pinus sp.	Pine	Fair	•
144	30.5	Quercus sp.	Oak	Fair	•
145	27	Platanus x acerifolia	London Planetree	Fair	•
146	37	Quercus sp.	Oak	Fair	•
147	26	Pinus sp.	Pine	Fair	•
148	24	Quercus sp.	Oak	Fair	•
149	25.5	Pinus sp.	Pine	Fair	•
150	12	Quercus sp.	Oak	Fair	•
151	23	Quercus sp.	Oak	Fair	•
152	5.5	Acer platanoides	Norway Maple	Fair	•
153	28	Quercus sp.	Oak	Fair	•
154	9	Quercus sp.	Oak	Fair	•
155	7/7	Robinia pseudoacacia	Black Locust	Fair	•
156	12	Quercus sp.	Oak	Fair	•
157	15	Robinia pseudoacacia	Black Locust	Fair	•
158	8.5	Quercus sp.	Oak	Fair	•
159	26.5	Acer platanoides	Norway Maple	Fair	•
160	18.5	Acer platanoides	Norway Maple	Fair	•
161	12.5	Malus sp.	Crabapple	Fair	•
162	8	Malus sp.	Crabapple	Fair	•
163	24.5	Platanus x acerifolia	London Planetree	Fair	•
164	39	Platanus x acerifolia	London Planetree	Fair	•



**The Estates at Brookville
 Property Subdivision**

Titan Golf, LLC
 Tam O'Shanter Golf Club
 74 Fruitledge Road
 Village of Brookville, New York 11545

No.	Revision	Date	App'd.

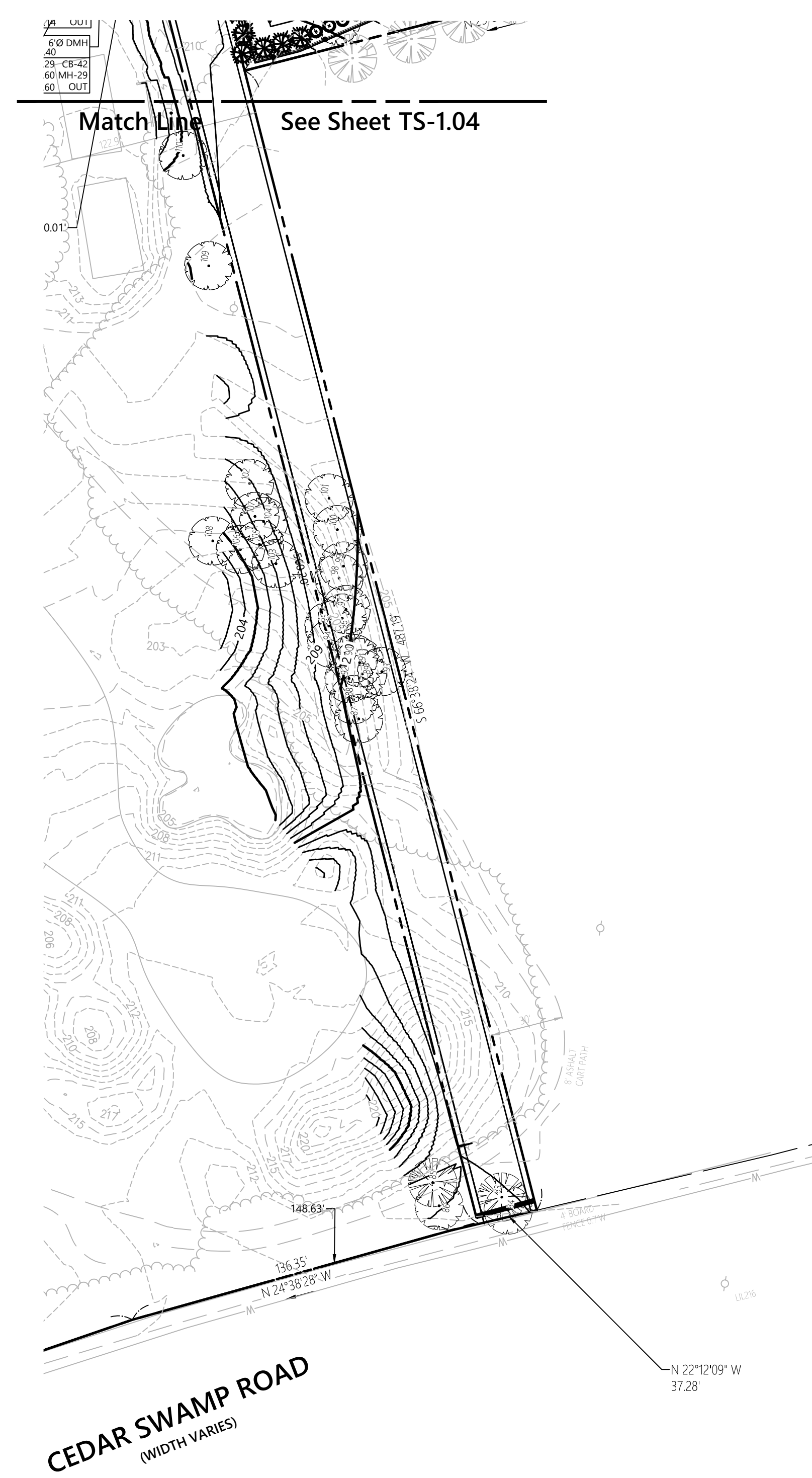
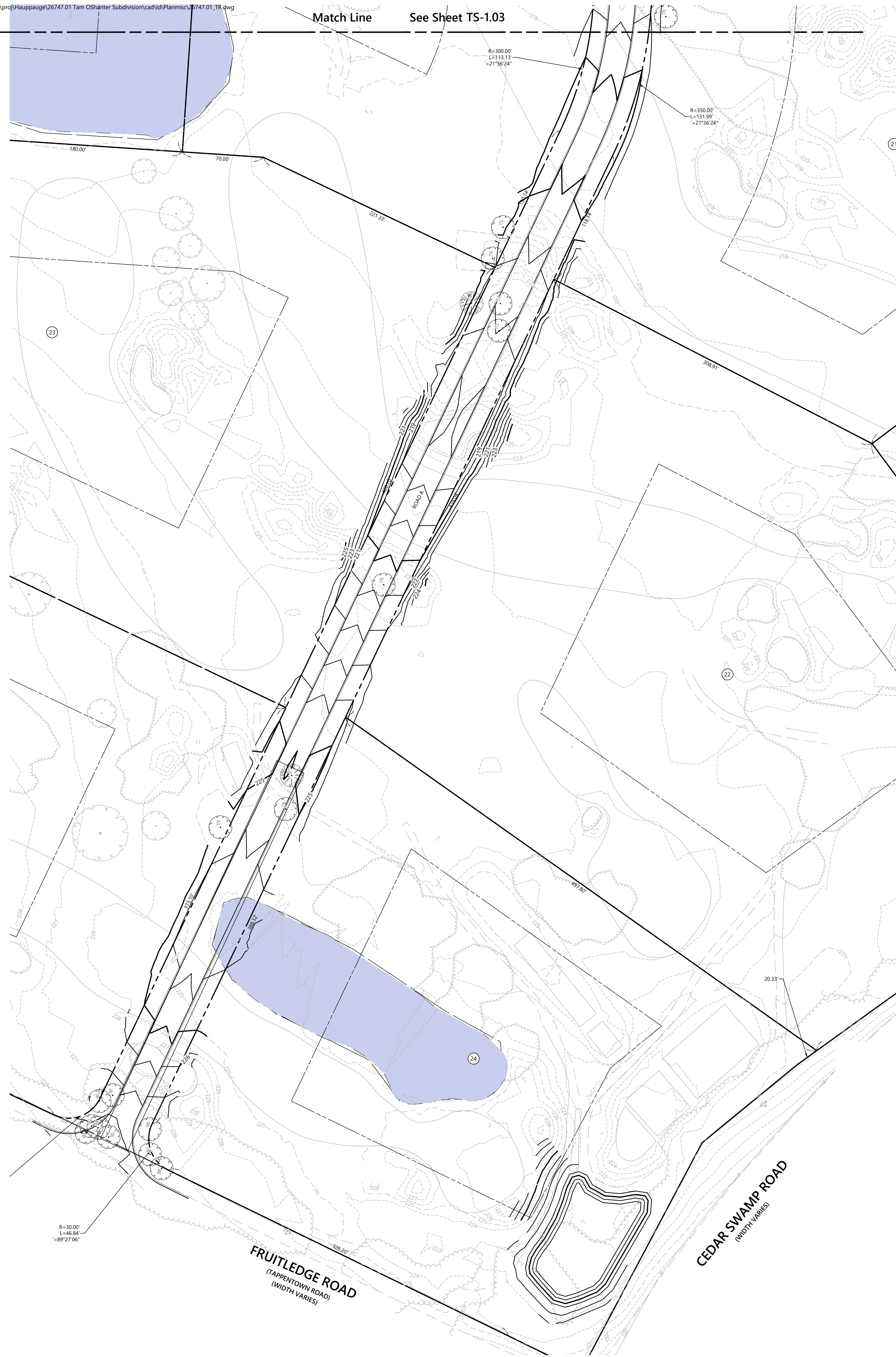
Designed by: TC Checked by: SS
 Issued for: Preliminary Subdivision Date: Aug. 30, 2021

Not Approved for Construction
 Tree Survey
 Partial Plan

Drawing Number
TS-1.04

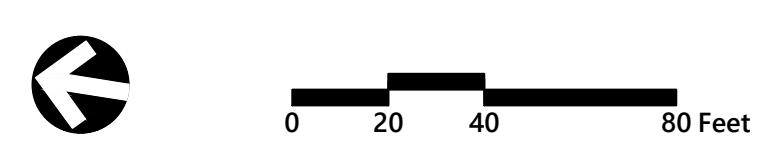
Sheet 5 of 6
 Project Number
 26747.01

IT IS A VIOLATION OF SECTION 2209 OF ARTICLE 165 OF THE NEW YORK STATE EDUCATION LAW TO BEAR THE SEAL OF A PROFESSIONAL ENGINEER UNLESS THE PERSON IS ACTING UNDER THE DIRECTION OF A LICENSED PROFESSIONAL ENGINEER.



Tree No.	DBH	Botanical Name	Common Name	Condition	Invasive
83	18.5	Pinus sp.	Pine	Poor	
84	14	Acer platanoides	Norway Maple	Fair	•
85	23.5	Pinus sp.	Pine	Poor	
86	14	Acer platanoides	Norway Maple	Fair	•
87	11	Acer platanoides	Norway Maple	Fair	•
88	10	Acer platanoides	Norway Maple	Fair	•
89	9	Acer platanoides	Norway Maple	Fair	•
90	12.5	Acer platanoides	Norway Maple	Fair	•
91	14.5	Acer platanoides	Norway Maple	Fair	•
92	16	Acer platanoides	Norway Maple	Fair	•
93	5	Acer platanoides	Norway Maple	Fair	•
94	5.5	Acer platanoides	Norway Maple	Fair	•
95	12	Acer platanoides	Norway Maple	Fair	•
96	6.5	Acer platanoides	Norway Maple	Fair	•
97	13.5	Acer platanoides	Norway Maple	Fair	•
98	22	Acer sp.	Maple	Fair	
99	11.5	Acer platanoides	Norway Maple	Fair	•
100	13	Acer platanoides	Norway Maple	Fair	•
101	13	Quercus sp.	Oak	Fair	
102	11	Acer platanoides	Norway Maple	Fair	•
103	17	Acer platanoides	Norway Maple	Fair	•
104	7.5	Acer platanoides	Norway Maple	Fair	•
105	11.5	Acer platanoides	Norway Maple	Fair	•
106	11.5	Quercus sp.	Oak	Poor	
107	20	Carya sp.	Hickory	Fair	
108	11/11	Acer platanoides	Norway Maple	Fair	•
109	24	Quercus sp.	Oak	Fair	
110	22	Quercus sp.	Oak	Fair	

Tree No.	DBH	Botanical Name	Common Name	Condition	Invasive
171	26	Pinus sp.	Pine	Fair	
172	16.5	Platanus x acerifolia	London Planetree	Fair	
173	27.5	Quercus sp.	Oak	Fair	
174	24.5	Acer platanoides	Norway Maple	Fair	•
175	22	Acer platanoides	Norway Maple	Fair	•
176	35.5	Quercus sp.	Oak	Fair	
177	33	Pinus sp.	Pine	Fair	
178	13	Ilex sp.	Holly	Fair	
179	34.5	Prunus serotina	Black Cherry	Fair	
180	22.5	Aesculus hippocastanum	Horsechestnut	Fair	
181	53	Juglans sp.	Walnut	Fair	
182	18.5	Larix sp.	Larch	Fair	
183	11	Acer platanoides	Norway Maple	Fair	•
184	19.5	Acer platanoides	Norway Maple	Fair	•
185	46	Acer sp.	Maple	Poor	
186	24	Larix sp.	Larch	Fair	
187	19	Acer platanoides	Norway Maple	Fair	•
188	25.5	Acer platanoides	Norway Maple	Fair	•



The Estates at Brookville Property Subdivision

Titan Golf, LLC
Tam O'Shanter Golf Club
74 Fruitledge Road
Village of Brookville, New York 11545

No. Revision Date App'd.

Designed by: TC Checked by: SS
Issued for: Preliminary Subdivision Date: Aug. 30, 2021

Not Approved for Construction

Tree Survey Partial Plan

STATE OF NEW YORK
PROFESSIONAL ENGINEER
TS-1.05
Sheet 6 of 6

Project Number: 26747.01